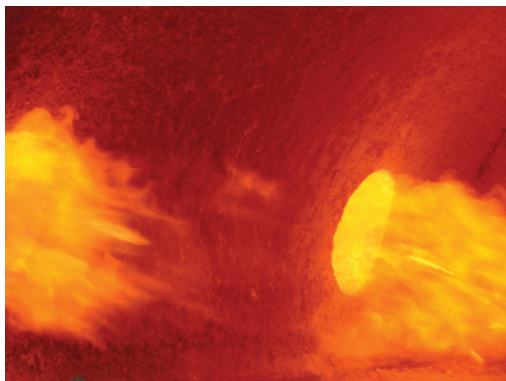


New Code	Old Code	Stranding & Wire Diameter			Sectional Area			Weight kg/km	Load kN	Resistance ohm /km	Capacity A
		Aluminium mm	Steel mm	Diameter mm	Aluminium mm ²	Steel mm ²	Total mm ²				
305 - AL3/39 - ST1A	305/40	54/2.68	7/2.68	24.1	304.6	39,5	344,1	1 150,3	134,88	0,109 3	700
339 - AL3/30 - ST1A	340/30	48/3.00	7/2.33	25.0	339.3	29,8	369,1	1 170,2	134,12	0,098 0	740
382 - AL3/49 - ST1A	380/50	54/3.00	7/3.00	27.0	381.7	49,5	431,2	1 441,4	169,01	0,087 2	790
386 - AL3/34 - ST1A	385/35	48/3.20	7/2.49	26.7	386.0	34,1	420,1	1 332,4	152,74	0,086 2	800
434 - AL3/56 - ST1A	435/55	54/3.20	7/3.20	28.8	434.3	56,3	490,6	1 640,0	190,04	0,076 6	845
449 - AL3/39 - ST1A	450/40	48/3.45	7/2.68	28.7	448.7	39,5	488,2	1 547,7	177,39	0,074 1	865
490 - AL3/64 - ST1A	490/65	54/3.40	7/3.40	30.6	490.3	63,6	553,8	1 851,4	214,54	0,067 9	905
550 - AL3/71 - ST1A	550/70	54/3.60	7/3.60	32.4	549.7	71,3	620,9	2 075,6	240,52	0,060 5	960
562 - AL3/49 - ST1A	560/50	48/3.86	7/3.00	32.2	561.7	49,5	611,2	1 937,8	222,11	0,059 2	980
679 - AL3/86 - ST1A	680/85	54/4.00	19/2.40	36.0	678,6	86,0	764,5	2 547,8	298,17	0,049 0	1 080



New Code	Old Code	Stranding & Wire Diameter		Diameter mm	Sectional Area			Weight kg/km	Load kN	D.A. Resistance ohm /km
		Aluminium mm	Steel mm		Aluminium mm ²	Steel mm ²	Total mm ²			
183 - AL5/43 - ST1A	KEZIAH	30x2.79	7x2.79	19.5	183.4	42.8	226.2	841.6	102.89	0.1740

IEC Sizes IEC 61089 Standard

Code Word	Stranding & Wire Diameter		Diameter mm	Sectional Area			Weight kg/km	Load kN	D.A. Resistance ohm /km
	Aluminium mm	Steel mm		Aluminium mm ²	Steel mm ²	Total mm ²			
16	6/1.98	1/1.98	5.93	18.4	3.07	21.5	74.4	9.02	1.7934
25	6/2.47	1/2.47	7.41	28.8	4.80	33.6	116.2	13.96	1.1478
40	6/3.13	1/3.13	9.38	46.0	7.67	53.7	185.9	22.02	0.7174
63	6/3.92	1/3.92	11.80	72.5	12.10	84.6	292.8	34.68	0.4555
100	18/2.85	1/2.85	14.30	115.0	6.39	121.0	366.4	41.24	0.2880
125	18/3.19	1/3.19	16.00	144.0	7.99	152.0	458.0	51.23	0.2304
125	26/2.65	7/2.06	16.80	144.0	23.40	167.0	579.9	69.86	0.2310
160	18/3.61	1/3.61	18.00	184.0	10.20	294.0	586.2	65.58	0.1800
160	26/3.00	7/2.34	19.00	184.0	30.00	214.0	742.3	88.52	11.805
200	18/4.04	1/4.04	20.20	230.0	12.80	243.0	732.8	81.97	0.1440
200	26/3.36	7/2.61	21.30	230.0	37.50	268.0	927.9	110.64	0.1444
250	22/4.08	7/2.27	23.10	288.0	28.30	316.0	1.013.5	117.09	0.1154
250	26/3.75	7/2.92	23.80	288.0	46.90	335.0	1.159.8	138.31	0.1155
315	45/3.20	7/2.14	25.60	363.0	25.10	388.0	1.196.5	136.28	0.0917
315	26/4.21	7/3.28	26.70	363.0	59.00	422.0	1.461.4	171.90	0.0917
400	45/3.61	7/2.41	28.90	460.0	31.80	492.0	1.519.4	172.10	0.0722
400	54/3.29	7/3.29	29.70	460.0	59.70	520.0	1738.3	201.46	0.0723
450	45/3.83	7/2.55	30.60	518.0	35.80	554.0	1.709.3	193.61	0.0642
450	54/3.49	7/3.49	31.50	518.0	67.10	585.0	1.955.6	226.64	0.0643
500	45/4.04	7/2.69	32.30	575.0	39.80	615.0	1.899.3	215.12	0.0578
500	54/3.68	7/3.68	33.20	575.0	74.60	650.0	2.172.9	251.82	0.0578
560	45/4.27	7/2.85	34.20	645.0	44.60	690.0	2.127.2	240.93	0.0516
560	54/3.90	19/2.34	35.10	645.0	81.60	727.0	2.420.9	283.21	0.0516
630	72/3.58	7/2.39	35.80	725.0	31.30	756.0	2.248.0	249.62	0.0459
630	54/4.13	19/2.48	47.20	725.0	91.80	817.0	2.723.5	318.61	0.0459
710	72/3.80	7/2.53	38.00	817.0	35.30	852.0	2.533.4	281.32	0.0407
710	54/4.39	19/2.63	39.50	817.0	104.00	921.0	3.069.4	359.06	0.0407
800	72/4.04	7/2.69	40.40	921.0	39.80	961.0	2.854.6	316.98	0.0361
800	84/3.74	7/3.74	41.10	921.0	76.70	998.0	3.145.1	356.03	0.0362
900	72/4.28	7/2.85	42.80	1.036.0	44.80	1.081.0	3.211.4	356.60	0.0321
900	84/3.96	7/3.96	43.60	1.036.0	86.30	1.122.0	3.538.3	400.53	0.0322
1.000	84/4.28	19/2.51	45.90	1.151.0	93.70	1.245.0	3.916.8	446.37	0.0289
1.120	84/4.42	19/2.65	48.60	1.289.0	105.00	1.394.0	4.386.8	449.93	0.0258